



Mt. Hood Guardian

Volume 11, Issue #2

The newsletter of the Mt. Hood Cultural Center and Museum

Summer 2010

Museum roof sprouts a box?

The long awaited museum elevator is about to become a reality. **Calvin Vader**, Superintendent, **KDR Construction** has worked since early March to construct the elevator shaft, including the override space atop the museum building. The elevator cabin and the mechanical parts are scheduled to arrive July 15. It will take about three weeks to install the elevator and complete the trim and finishing touches.

The museum staff will be very happy to move out of our cramped work space. Keeping the Information Center, the museum office, and at least some of the galleries, open during this construction has been a struggle. Just as it is not recommended that one occupy their home while doing a complete kitchen remodel, we would not recommend occupying a museum during a major remodel. The jack hammering, dust and pounding is all over now, and we are anxious to reopen the office, bookstore, art gallery and the rest of the museum that has been closed since March.

So what is with the box on the roof? The 14' x 14' protrusion houses the elevator mechanism. This square, flat-topped box will also be the foundation for a new old Forest Fire Lookout. Old Smokey's, retired US Forest Service employees, will construct a replica of the famous Mount Hood Summit Lookout, built by Lige Coalman in 1916. That lookout served as a landmark until the early 1940's when it finally succumbed to the forces of nature and slide over the hill.

The new lookout atop the museum building will be more than a building ornament. The lookout will be accessible and be equipped with the tools and equipment used to detect and report forest fires for years. The lookout will offer unobstructed views of Mount Hood and the surrounding landscape, and become a visitor attraction in its own right.



Remodel of Clubhouse Gallery and research library next on museum's to do list.

The capital campaign that raised the \$300,000 for the elevator is continuing. The goal is raise an additional \$300,000 to complete the lookout, the research library and the clubhouse gallery. Each of these projects are independent of each other, so as funds become available work on these projects can begin. We will pursue all available grants and foundations, but It will be a challenge to raise funds given the current economic condition of the state. Individual small donation can help by demonstrating the commitment and support of the MHCC&M by the community, members and friends of Mount Hood. Call **Diane Lokting**, if you are interested in helping raise funds for the project or have questions about tax deductions, the Oregon Cultural Trust program, or know of a potential source of funding.

MHCC&M granted contract for county tourism information center.

Danielle Cowan, Executive Director, Clackamas County, Tourism and Cultural Affairs, announced that the Mt. Hood Cultural Center & Museum was selected to provide visitor information services, including restrooms in the Mt. Hood area. The museum has been providing this service for several years during museum hours. This contract will expand the hours of visitor services and provide funds for upgrading the methods of delivering visitor information. The museum and visitor information center will now open at 9:00 am every day.

Volunteers needed.

Mt. Hood Cultural Center and Museum is proud of the fact the organization, and all operations including the Arts Cabins project is entirely run by volunteers. We have one and one-half paid employees that staff the center and operate the museum store. We are grateful to the numerous individuals that volunteer on a regular basis and those that volunteer for special projects and events. The need for volunteers will be great this fall after the elevator contractors complete the construction work. The Forest Gallery, Clubhouse Gallery and the Mountain Art Gallery exhibits all need to be reinstalled. If you can spare some time, leave your contact information with the staff. Thank you in advance.

The Mt. Hood Cultural Center and Museum is dedicated to preserving and interpreting the history of Mt. Hood, the guardian peak of the Oregon Country, while serving the social and humanities needs of the mountain community

Cultural Center Events

Wy'east Artisans Annual Theme Show

Continues to August 21

This is a must-see annual show featuring local artists. "IT'S A CIRCUS" is the theme of this year's mixed media show, including oils, watercolors, glass, ceramics and more. Most works are for sale after the show closes. Here is a chance to acquire original art from local artists.

Steiner Cabins Tour

August 14, 10:00 am – 3:00 pm

Annual tour of handcrafted, 1920-40's vintage log cabins. Drive on a self-guided tour to cabins in Rhododendron, Zigzag and Brightwood. Tickets are \$15 for Mt. Hood Museum members or \$18 for non-members. Purchase will-call tickets by calling the museum office at 503-272-3301. Pick up tickets and tour map at Mt. Hood Foods, in Rhododendron, Oregon, on the day of the tour.

New Mountain Lodges Tour

August 21, 10:00 – 3:00 pm

Tour a sampling of new luxury family lodges on Mount Hood, in the village of Government Camp. Each custom built lodge is a splendid example of combining rustic architecture, natural materials, and modern building practices to create luxury living accommodations close to the mountains' outdoor recreation sites. Tickets are \$15 for Mt. Hood Museum members, \$18 for non-members. Purchase will-call tickets at 503-272-3301. Pick up tickets and tour guide at the Mt. Hood Cultural Center and Museum on the day of the tour.

The following two events also take place at the same time. Plan to spend the weekend and take in the Blacksmith demonstrations and check out the Raven Art Show and Sale.

Blacksmith Week

August 18 – 22, 10:00 am to 4:00 pm

Join Blacksmiths from all over the region for demonstrations of the craft. Hand forged items will be for sale. Demonstrations will take place at the Arts Cabins and the Museum.

Raven Art, Show and Sale

August 18 – 22, 9:00 am – 5:00 pm

Mountain Art Gallery, Mt. Hood Museum

Using the antics of Government Camp's unofficial mascot, artist and crafters, using various media have created a unique art show and sale with a raven theme. One highlight of the show is a metal room divider by Dick Mook, a Blacksmith Week participating artist. Darryl Nelson, Director of Blacksmithing, Arts Cabins, and other blacksmiths participating in Blacksmith Week, will have hand-forged art featuring the raven also.

Mount Hood Heritage Day

September 18.

Mark this date, and plan to attend this annual celebration of Mount Hood's outdoor recreation heritage. Mt. Hood Ski Bowl will host the event at the Ski Bowl this year. A full afternoon and evening of activities, in Government Camp. The museum will have a special opening of the Hal Lidell and Friends Black and White Photograph Show and other activities that day. The day will culminate with a silent and oral auction gala. Watch for posters and our Facebook page for details.

MHCC&M volunteers are busy soliciting donations of items and services for the silent and oral auction. All outdoor recreation clubs are being offered the chance to have a booth at the event. We are looking for volunteers to assist with the many tasks associated with this celebration. Call the museum if you can volunteer and/or have an item to donate for the auction.

Photography of Mount Hood 1900 - 1950

September 18 – January 15.

This black and white photograph exhibit will introduce visitors to the Hal Lidell photograph collection held by the MHCC&M. The exhibit will also include photographs by other early twentieth-century Mount Hood professional photographers, including Ray Atkeson, Hugh Ackroyd, Al Monnor, George Henderson and others. This exhibit is planned in part to celebrate the completion the Hal Lidell negatives digitizing and preservation project. This project was funded by a grant from the Clackamas County Cultural Coalition.

Arts Cabins Classes

Betsy Valian, director of the Arts Cabins has planned a full slate of arts and crafts classes this summer and fall. Visit the www.artscabins.org website for complete details and listings as well as registration information.



This vintage log cabin will be on the 2010 Steiner Cabins Tour.

Curators Journal

This newsletter space is devoted to news about the Museum Collection. Donations to the collection are listed to recognize the donors and inspire others to contribute items to the collection. The museum collection provides the resources for museum exhibits, traveling shows and research.

Recent Collection Donations:

Accessions: Jan. –June 2010

Henry Bendinelli – Vintage Pendleton Ski Sweater.

Heisler Anne – Vintage surveyor's chain, Espinosa carved sign, collection of classic Mount Hood books.

Louise Godfrey – Book- Off to Mt. Hood, Wooley.

Liz Collins – Vintage wood skis collected by Dick Collins.

Susan Wainwright – vintage Mount Hood map.

Anne Jenkins – Collection of items related to Mike Deveka, US Winter Olympics and Nordic skiing.

Maryellen Englesby – Photograph of son Lee in US Olympic uniform. Magazine article.

Dave Scott – vintage Mt. Hood Maps and Cascade Ski Club pinback.

Mazamas – Numerous objects related to skiing, climbing or Mount Hood, including: collection of backpacking stoves, ski patches, military climbing and ski gear, crampons, Nordic skiing memorabilia.

Cheryl Maki - Vintage Multnomah Falls framed photographs, Ray Atkison book.

Judy Gilsdorf – Books and Timberline Lodge poster.

Gail O'Neill – Stained glass snowflake.

Toni Wainwright – Vintage Olin Ballet Skis.

Julie Lang – 3 pairs of vintage snow skis.

Fred Schmelling – *Schnee Vogeli Ski Club* memorabilia: hats, patches, pinbacks, songbook, stickers and archive material.

Nancy Fischer – ski clothing, ski race trophies circa 1946-49 belonging to .

Charles Achterman – Pair child's ski poles.

Lee Perry – Vintage Amputee Championship Ski Poster.

James DeShazer – Collection of vintage archive material collected or written by Grant DeShazer relating to Barlow Road or Zigzag area. 1937 photograph album documenting Mt. Hood Loop Highway.

Nancy Spencer – Winter Olympics memorabilia. Moscow Mule Copper Cup from Bowman's Golf Club.

Gary Starkovich – vintage US Forest Service desk.

Paula Palmer – Vintage Head Skis and poles.

Ray Imel Jr. – Vintage movies of Timberline Lodge and the Sheriff's Posse Pony Express Race.

Michael LaRocco – Large photograph album, compiled by Mike LaRocco in 1937 at CCC Camp Summit.

Mike Ash – Vintage USFS field telephone.

Alma Reick – Broadleaf trees of NW poster.

Photograph albums are goldmines for curators.

The museum struck gold twice this spring when two 1937 photograph albums were donated to the museum collection. Both albums contained good quality amateur snapshots, mounted and labeled with the traditional white pencil on black paper. The album donated by James DeShazer documents a trip from Zigzag to Crown Point via the Loop Highway, with a few side trips. The album was compiled by Grant and Velma DeShazer, descendants of area homesteaders and local historians. The second album was donated by the son of a gentleman from Illinois, who spent 1937 as a Civilian Conservation Corp enrollee at Camp Summit, just west of Government Camp. Ray Imel was impressed with the Oregon scenery and a good photographer. He took many photographs of the camp, his tent mates, and of the projects the men worked on. This album contains rare views of Camp Summit and CCC project work. Both these albums are valuable for their value to researchers. One photograph shows CCC workers quarrying rock by hand and loading the material in to mining type handcars. Why and where are these men quarrying rock by hand? Another photograph shows a row of tarpaper-covered cabins with a USA flag flying from the traditional flagpole in the center of the camp. This photograph is labeled Camp One and One Half. This photograph is the **Mount Hood Trivia Quiz** for the summer 2010 Guardian Newsletter: What and where was Camp One and One Half at the time of this 1937 photograph. Be the first to contact the museum with the correct answer and win a prize. Ph. 503.272.3301 or email: mthoodmuseum@centurytel.org

Hans Wipper was the first to respond to the Trivia Quiz in the last edition. We were searching for the meaning of a mountain cabin name *End Weg Husli*. This cabin is appropriately named as Government Camp was considered the end of the road when this cabin was built in 1898. To ascend higher on Mount Hood from this point one needed to proceed on foot, until Judge Blossom later pioneered a wagon road to Camp Blossom, near the location of Timberline Lodge.

Collection donations are accepted every day at the museum. Tax deduction receipts are issued and all items are catalogued, including donor name and known history, in perpetuity. Please call before bringing large items to the museum.

In addition to accepting donations of museum collection artifact and money, the museum, like all non-profit organizations, accepts in-kind services, used equipment and supplies. Presently we could use a microwave, a computer, office supplies, small engine repair services, and small power tools. The Arts Cabins is looking for an Ashford spinning wheel.

Mt Hood Cultural Center and Museum

PO Box 55, 88900 E. Hwy 26, Bus. Loop
Village of Government Camp, OR 97028
www.mthoodmuseum.org
Email: mthoodmuseum@centurytel.net

Non Profit Org.
US POSTAGE
PAID
Gov't Camp,
OR
Permit No. 11

Check out new museum store and art gallery merchandise.

The art sales gallery has lot of new works of art. Several new artists have placed their work on consignment. Should you need a small gift or want to make a major art purchase, you will find some high quality, and original, local art in the Museum Art Sales Gallery.

The museum store stocks a number of local history books, as well as unique posters, and cards. Check out the collection of historic photographic prints. A large selection of note cards and postcards are always in stock. We have the best seasonal maps and all the necessary recreation permits.

Return Service Requested

MUSEUM & VISITOR CENTER HOURS

Open everyday, except holidays 9 - 5
Admission: donations accepted

New members, Contributors and Volunteers Jan. – June 2010

Memberships

Summit Club

Bing & Carolyn Sheldon

Benefactor

Margaret Branson

Patron

Judy Gilsdorf

Jim Kelly

Kurt Kessler

Richard Kuehner

Dave Rogers

Wendy Wendland

Gordy Winterrowd

Rob Wolf

Barbara Fox

Bill Rosenfeld

Cal Horn

Bill Davidson

Family

George Alfsen

James Bernklau

Dale Crockett

Peter Dodd

Craig Dodge

Nancy Drzymalski

Scott Farleigh

Leilani Gibson

Marie Hall

Jay Johnson

Don Kayser

Mark Larson

Lloyd Musser

Tom Lombard

Caroline McCorkle

Paul Oliver

Ross Petrie

Jerry Schmidt

Jeanne Schramm

Maureen Scottmader

Yon Sheldon

Margerite Spillman

Joel Stevens

Catherine Thoele

Colleen Walter

Dave Wellington

William Simon

Individual

Sue Allen

Bebe Arnold

James Cain

Corrine Swafford

William Devecka

Nancy Duhnkrack

Bud Grasinger

Ed Elliott

Harriet Gorman

Anne Jenkins

Lorraine Johnson

Steve Knauss

Jeanne Lampi

Julie Lang

Loreen Officer

Jim Quivey

Phil Ringle

Bill Savery

Charles Solberg

David Steward

Tom Templeton

Alice Wagstaff

Diane Walker

John Wilberding

Clubs

PACRATS

Skiyente Ski Club

Donations

Capital Campaign

Franklin Drake

Michael Menashe

Maureen Musser

Bill Wainwright

Jim Neill

General Fund

Greg Anderson

Nelson Bennett

Gene Bentley

John Brighton

Judy Burbank

Don Clay

Paula Jo Conway

Stephen Kafoury

Jim Kelly

David Marshall

Lana Miller

Glen Nilsen

Lee Perry

Charles Solberg

Tom Templeton

Betsy Valian

Judy Williams

Arts Cabins Project

Linny Adamson

In Memory of:

Klindt Vielbig

Lloyd Musser

Helen Asher

Alan & Lana Miller

In Honor of:

Dick Edminston

Alan & Lana Miller

Gail O'Neill

Alan & Lana Miller

Greg & Sue Blomgren

30th Wedding Anniversary

Alan & Lana Miller

Bill & Toni Wainwright

William Simon

Volunteers

Alma Reick, Lee Perry,

Richard Buscher, Ed Elliott,

John Marker, Judy Gildorf

Bill Wainwright, Bonnie Jondahl

Tom Firrantello, Jeff Ackerson

Bruce Haynes, Jamie Payne

Sam Slauson, Gary Randall

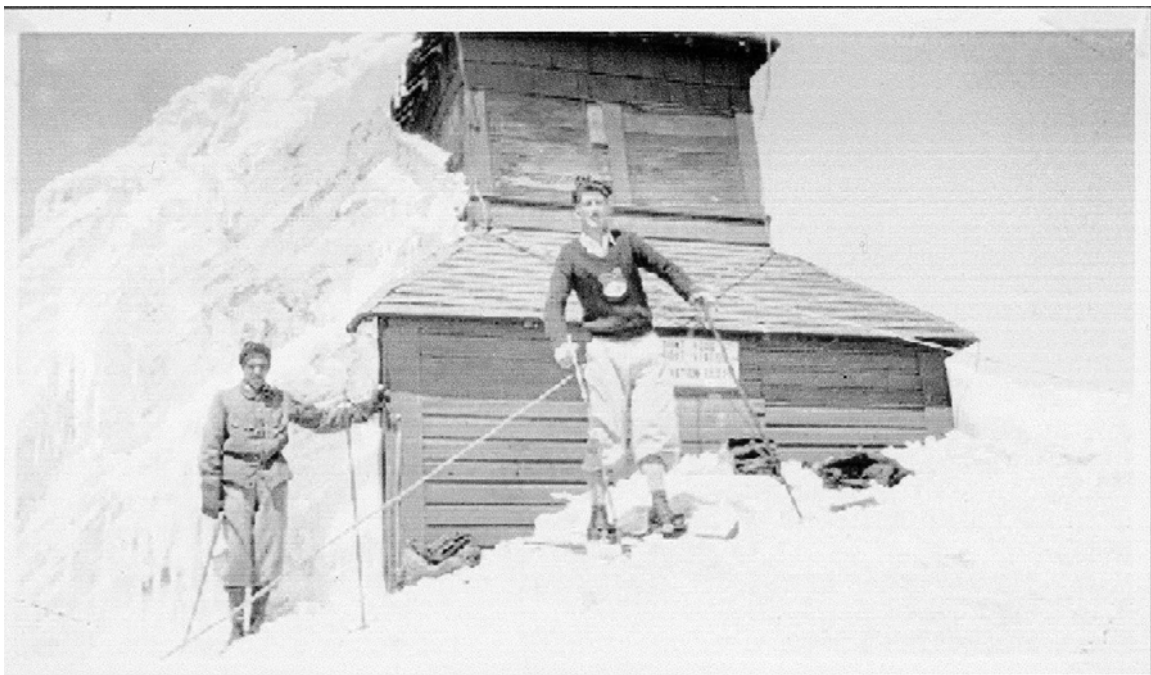


These lovely ladies and the old geezers below spent a special night at Silcox Hut this spring. Jeff Kohnstamm donated a night for 20 quests to the MHCC&M for the annual fundraiser. Terry and Bonnie Jondahl won the bidding war, invited some friends to join them provided they also made a donation to the Museum. A good time was had by all till the wee hours of the night.





This group of Ski the Glade 2010 participants dug deep in their closet for these 1970's vintage clothing.



This is the Summit Forest Fire Lookout that will be recreated and placed on top of the Museum elevator shaft. The skier in front of the build on the summit of Mount Hood about to begin his descent on the mountain on skies is the famous Mount Hood skier Hjalmar Hvam.